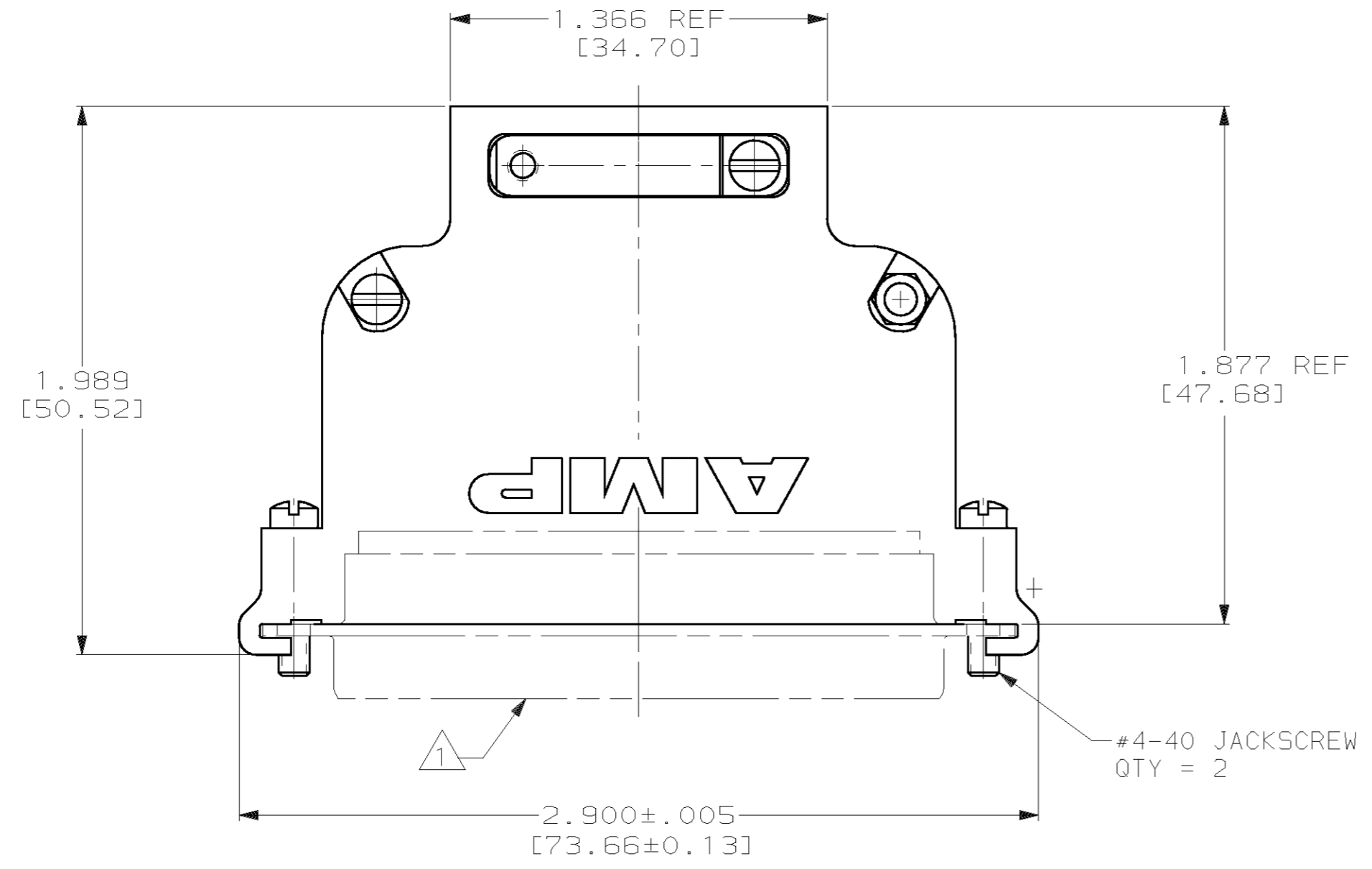
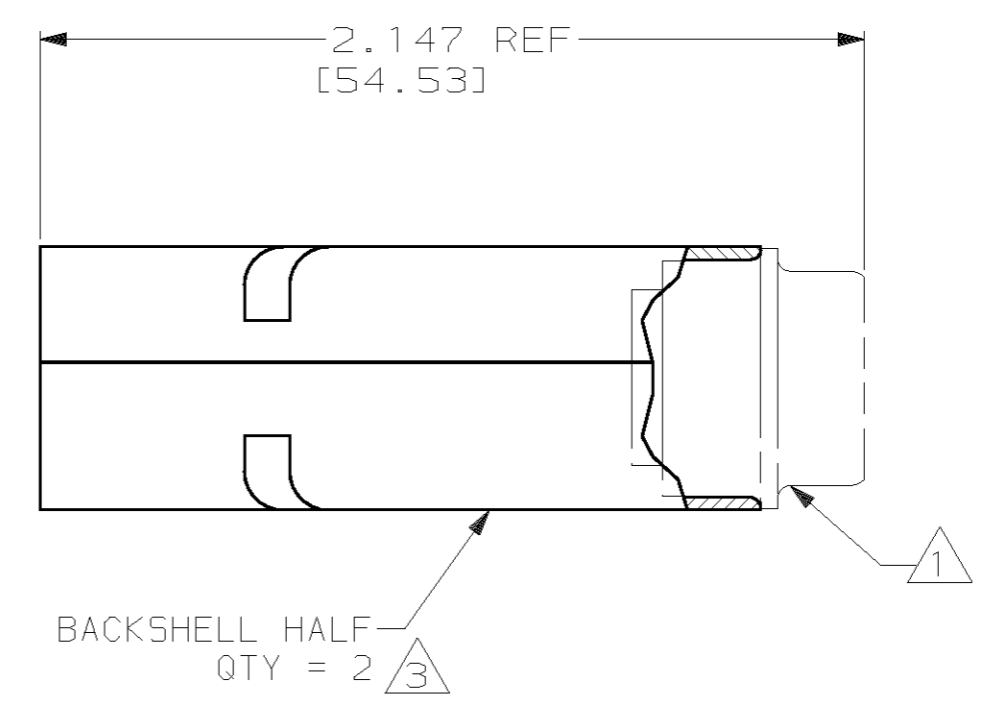
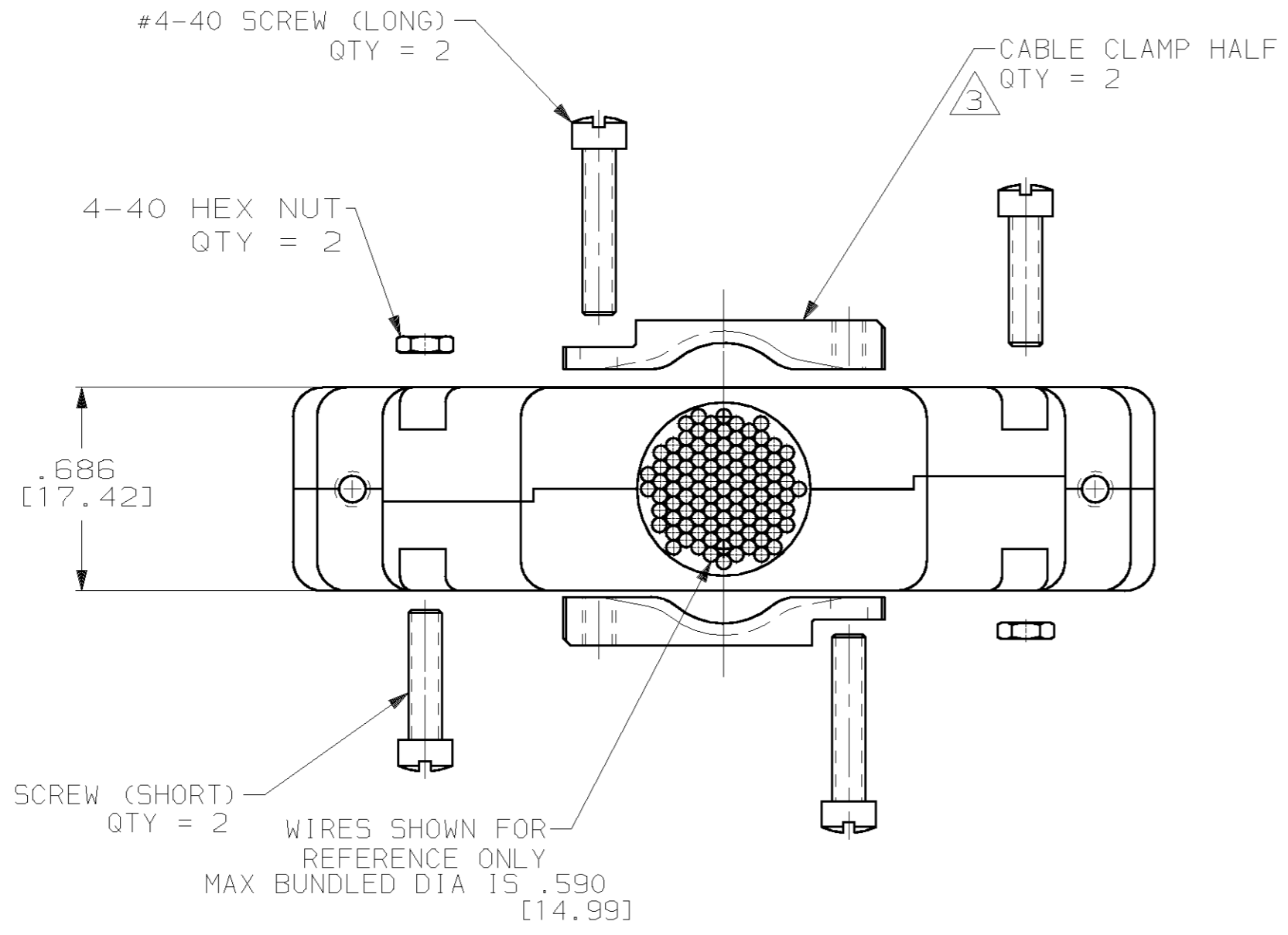


THIS DRAWING IS UNPUBLISHED. RELEASED FOR PUBLICATION .19
 © COPYRIGHT 19 BY AMP INCORPORATED. ALL RIGHTS RESERVED.

LOC		DIST		REVISIONS			
P	LTR	DESCRIPTION	DATE	DWN	APVD		
	0	RELEASED PER 0600-8275-99	2-99	CT	JN		



- 1 AMPLIMITE CONNECTOR SHOWN FOR REFERENCE ONLY. NOT SUPPLIED WITH BACKSHELL.
- 2. BACKSHELL KIT SHIPPED UNASSEMBLED, SHOW ASSEMBLED FOR REFERENCE ONLY.
- 3 BACKSHELL & CABLE CLAMP MATERIAL:
ALUMINUM PER ASTM-B-221
BACKSHELL & CABLE CLAMP FINISH:
ELECTROLESS NICKEL PER MIL-C-26074, CLASS I
- 4. MOUNTING HARDWARE MATERIAL & FINISH:
CARBON STEEL PER ASTM-A-108
ZINC PLATED PER ASTM-B-633, CLEAR CHROMATE

1218407-1
PART NO.

THIS DRAWING IS A CONTROLLED DOCUMENT.		DWN C.C. THOMAS 2-9-99	AMP Incorporated Harrisburg, PA 17105-3608	
DIMENSIONS: INCHES [mm]		CHK J. NORTON 3-10-99	AMP	
TOLERANCES UNLESS OTHERWISE SPECIFIED:		APVD J. NORTON 3-10-99	AMP	
0 PLC ±		PRODUCT SPEC	AMPLIMITE KIT, SIZE 6, TWO PIECE ALUMINUM BACKSHELL	
1 PLC ±		APPLICATION SPEC	SIZE	CAGE CODE
2 PLC ±			A2	00779
3 PLC ±.010 [0.25]			DRAWING NO	RESTRICTED TO
4 PLC ±			C-1218407	-
ANGLES ±			SCALE	SHEET
MATERIAL SEE CALLOUTS		FINISH SEE CALLOUTS	2:1	1 OF 1
		WEIGHT -	CUSTOMER DRAWING	REV 0